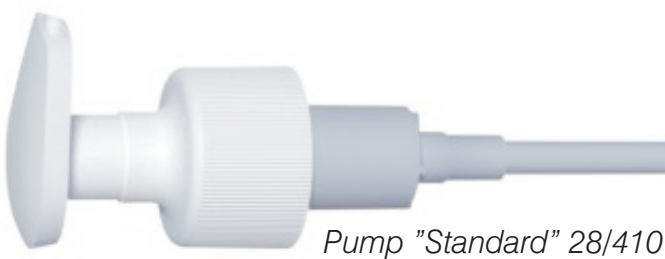
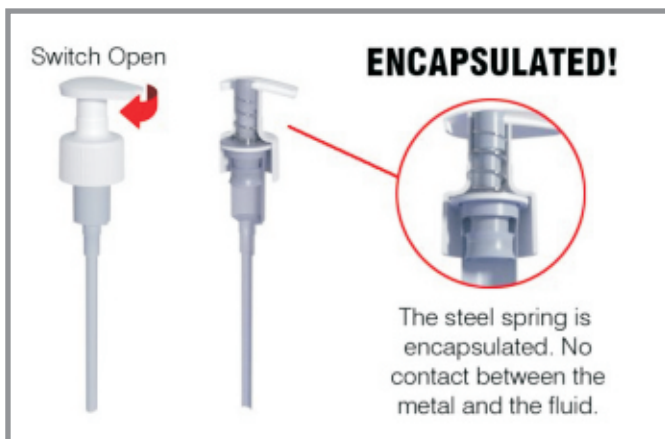




How do you differ from other suppliers?

"When the pandemic hit, we continued supplying. Our customers bottles where on the shelf - selling

...not having to wait for a container of packaging material that never arrived."

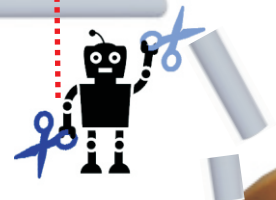


PUMPS

Our "Standard" white soap pump can be used with soap, lotion, sanitizers. The size of the thread is 28/410 DIN.

Can be ordered in any height. Delivered from our ready-to-ship warehouse or directly from the factory gates, to your door. Produced in Europe. Fast production and delivery. Truck deliveries from the factory in 12, 15 or 33 pallet trucks.

Tailored pump hose lengths also after delivery and pumps of all brands with 6mm hose.



TAILORED PUMP HEIGHT

Did you stock up on wrong size pumps or need smaller amounts of pumps for testing? No problem. We have cutting robots that can make around 7000 cut hoses an hour.

Just measure your bottle from bottom to opening to get the height or send us your bottle - we will fix it in an instant.



Pump "Slim" 28/410

PUMP MODELS

Our main two models are the "Standard" and the "Slim". The one that is sold, by far, the most is our white model Standard, with a drop shaped head.

If you need a truck load, meaning a direct factory delivery, you can choose any color for the Slim or the Standard. Expect a bit longer production time for colored ones.

We have and intend to have an abundance of white Standard models and black Slim models in our ready-to-ship warehouse. Contact us for more information on the pumps.



SLIM

Any color according to your preferences. The black Slim pump in the pic is a part of our standard 28/410 range.

Standard and Slim both have a "switch" to open function. Just turn the head to start using.



STANDARD

Our white pump called Standard is the most popular model. The hat of the pump is a bit wider and has a drop shaped form.

Slim and Standard models have an equal construction from the hat down.



SCREW

The classic Screw model has a lower profile during transport. It is also more "child-proof" thanks to the twist-to-open locking for dispensing.

The unique shape of the hat has a leaf-like form with down folded sides.



STORK

Translucent body and with a extended stylish hat on top. A new model with screw-to-open head and a long slim appearance.

Slim and Standard models have an equal construction from the hat down.

All colors are available



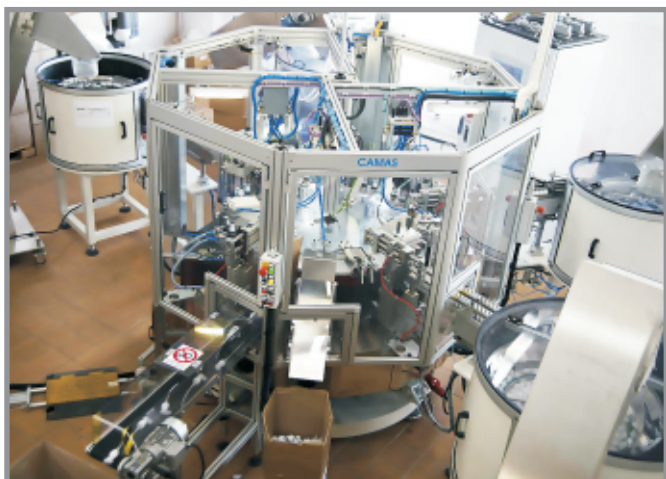
We produce different colors according to your wishes. Min. order 50.000 pcs.



Rain maker



When you need a vessel for carrying fluid and want to combine it with dispensing - we will probably be your best partner. Your Rainmaker. PET and HDPE bottles bundled together are our passion.



MANUFACTURING

Automated production lines ensure that you get the very best quality each time.

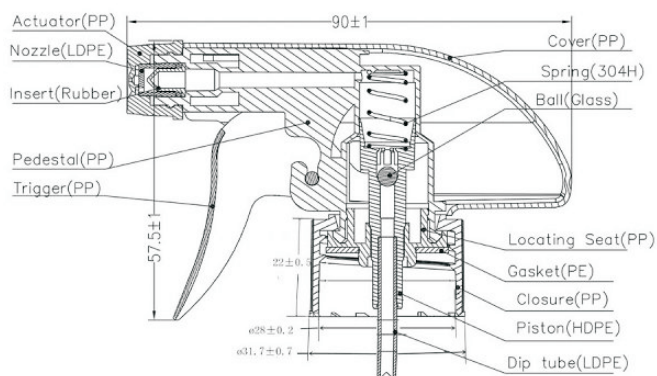
We only use certified partners, the kind that share the same definition of price as we do. Affordable prices at PLASTIX are defined by trust, great lead times, safe materials and long lasting products. To be able to repeat a job well done - every time.

Quality is not an act, it is a habit.

Aristotle.

TRIGGER PUMPS

We also carry 24 and 28mm trigger pumps in our range. These fit our standard ready-to-go warehouse bottles.



In our range you can also find a line of pure breed trigger bottles. The lead times are as low as 3 days from order. We can also arrange shipments outside our standard range.



Spray Pump



Foamer Pump



"Straight Shoulder"



"Round Shoulder" 500ml



Smoothie bottles



Canisters in all sizes



PatentDispenser anywhere



Also for big 1000ml bottles



Adjustable to any bottle



DISPENSER FOR BOTTLES

Why not take the experience of your product a little further?

At PLASTIX we also have our own innovation lab. Developing and manufacturing dispensers that make your bottled fluids even easier to use. E.g. Our PatentDispenser fits all pump bottles and offer a hospital grade hygiene for your soaps, lotions and sanitizer liquids.



Got a great idea for a bottle or combo? We offer free moulds for factory deliveries - also colored!

SECURE PRICES

Our customers benefit from our straight deliveries. From factory gates to your door. Ups and downs of unpredictable container shipments can be avoided.

We spend less energy and time on loading and re-loading and therefore the products will reach you faster and ecologically smarter. Safe and trusted transport to you.

What you need, when you need

You are being updated during the whole process from manufacturing at the plant, to loading time tables and exact time of arrival to you. Therefore you do not need to use expensive warehousing services, as the products will reach you when you need them. Smart.



Ready-to-ship

Order quantity: **Box or Pallet**

Instant delivery, yet restricted to our Ready-To-Ship range.

Shipped from the PLASTIX warehouse (Pietarsaari)

According to current stock levels

Usual delivery: Ready-To-Ship stock



Partial factory order

Order quantity: **4-8 pallets**

Delivery time 2-6 weeks

Directly from factory on 2 meter pallets (restricted height)

Ideal for orders of small bottles and closures

Usual delivery: 100-250ml bottles, Foamers, Spray bottles,

Trigger pumps, Closures



Wholesale price by truck

Order quantity: **9-15 pallets**

Delivery time 2-6 weeks

Directly from factory on 2 meter pallets (restricted height)

Orders of with combinations of bottles and closures

Usual delivery: Up to 500ml bottles, Pump+ Bottle combo,

Trigger pumps, Larger closure orders



Factory prices

Order quantity: **20-33 pallets**

Delivery time 2-8 weeks

Directly from the factory, full height pallets.

Large quantities at best prices

Usual delivery: Wholesale prices on all products, Canisters, 1000ml+ bottles